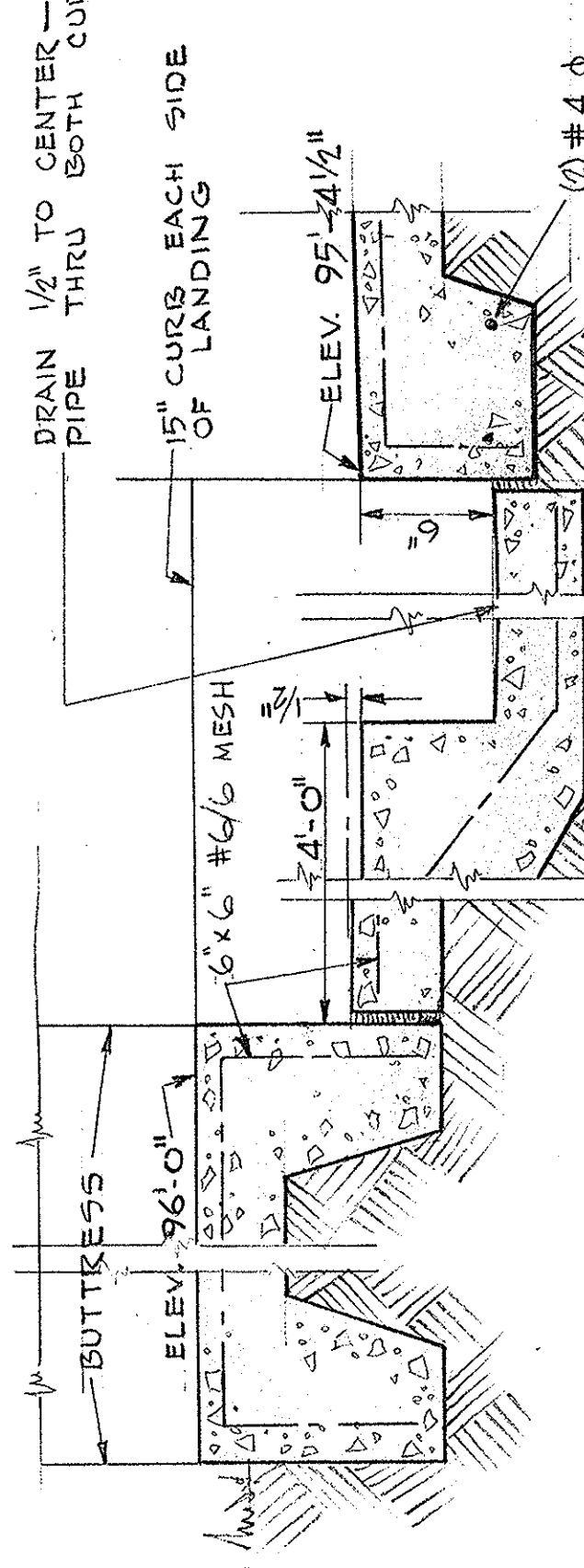
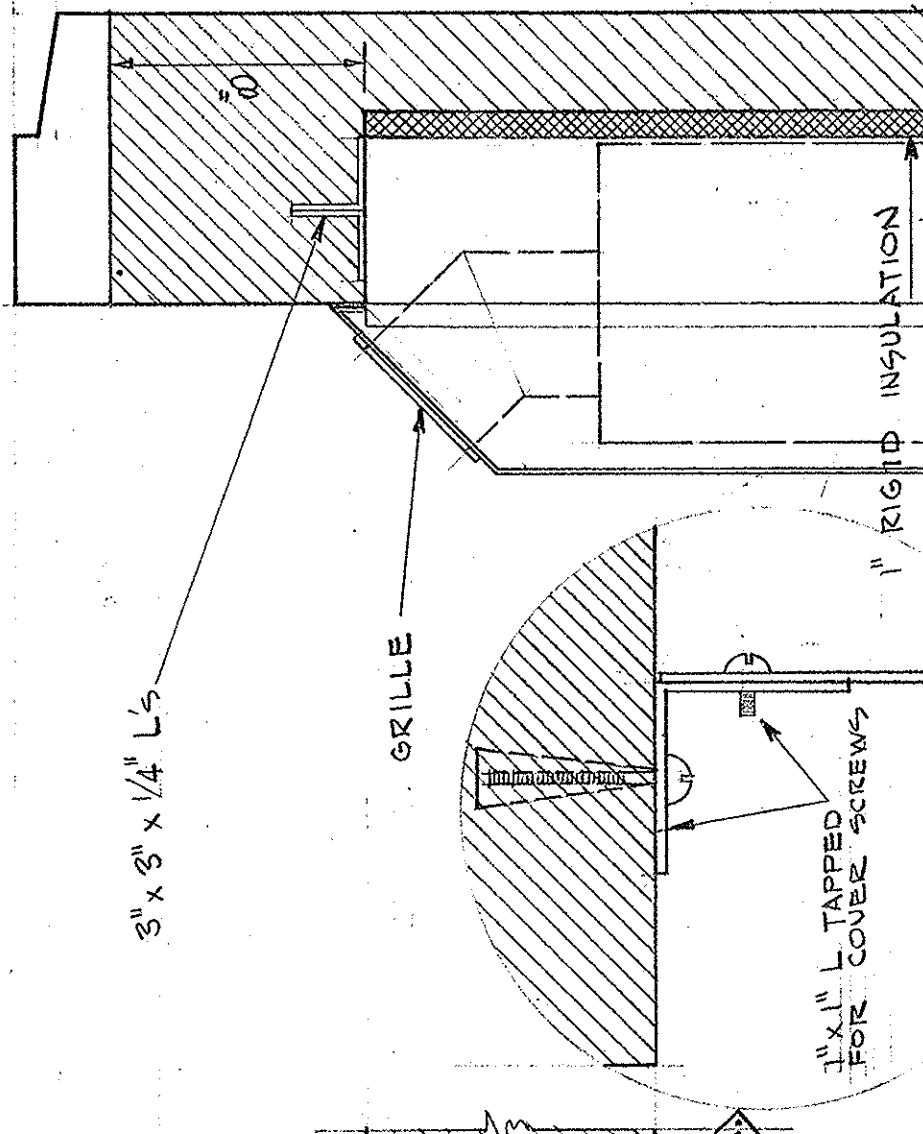


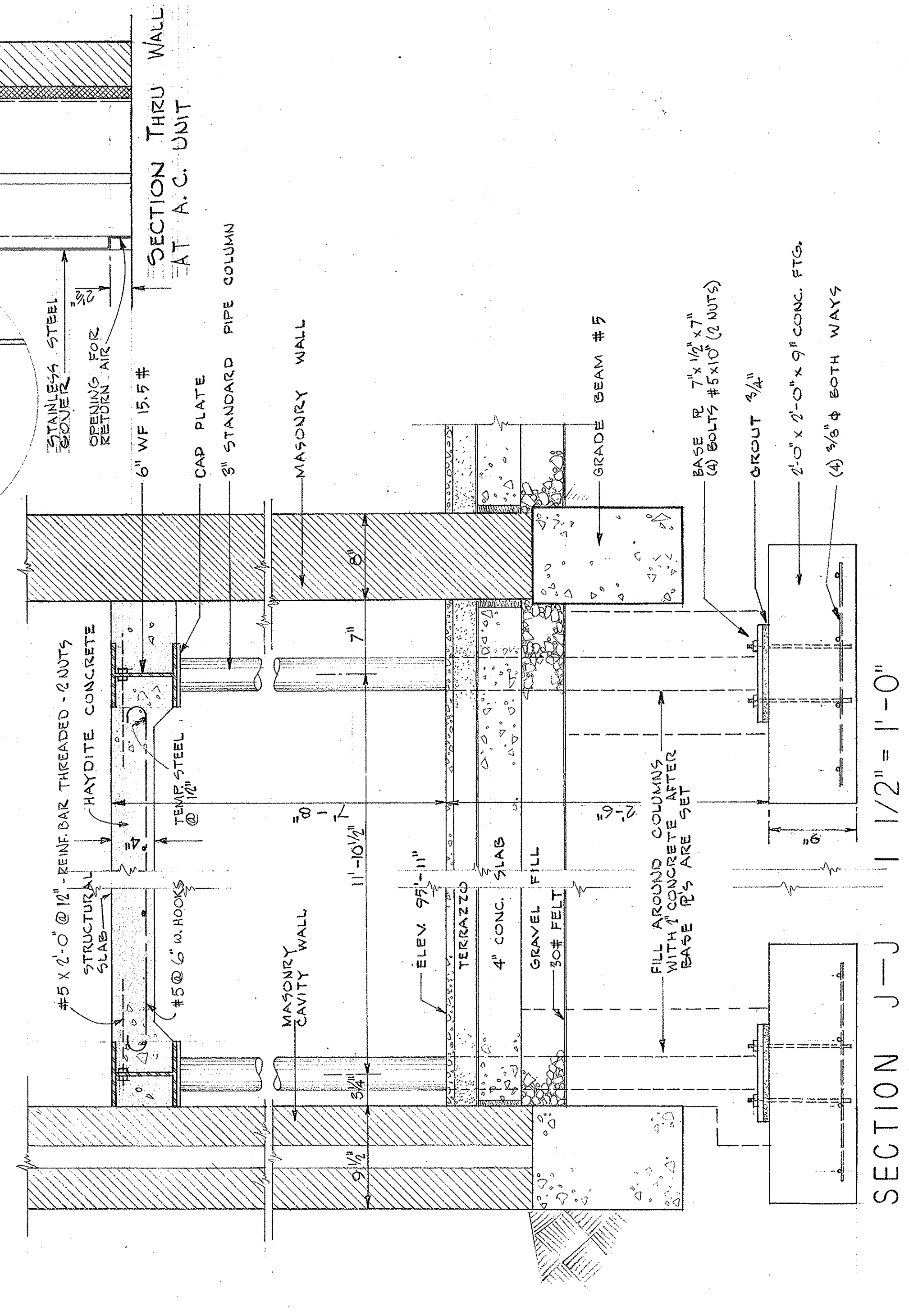
SECTION K-K



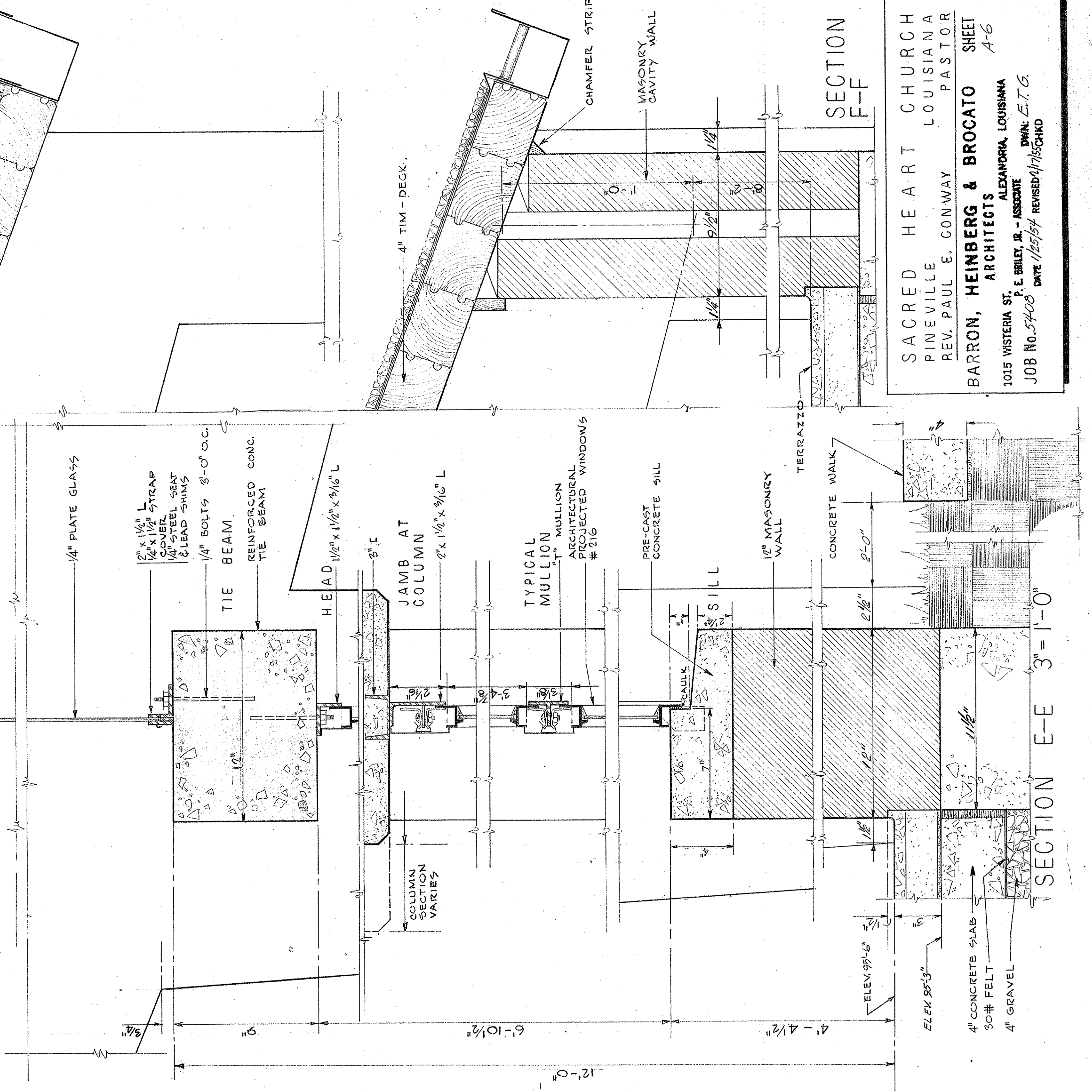
SECTION H-H 1/2" = 1'-0"



SECTION THRU WALL AT A.C. UNIT



SECTION J-J 1/2" = 1'-0"



SECTION E-E 3" = 1'-0"

SECTION F-F

SACRED HEART CHURCH  
 PINEVILLE LOUISIANA  
 REV. PAUL E. GONWAY PASTOR  
**BARRON, HEINBERG & BROCATO** ARCHITECTS  
 1035 WISTERIA ST. ALEXANDRIA, LOUISIANA  
 P. E. BRILEY, JR., ASSOCIATE  
 JOB No. 57408 DATE 1/25/57 REVISIONS 1/25/57