

THE DIMENSIONS TO THE FACE OF THE VESTMENT STORAGE UNIT SHALL BE AS SHOWN AT THE TIME OF THE WORK. FOUND A NUMBER OF 1/2" DIA LAMBRILLI TO BE REMOVED FROM THE UNIT.

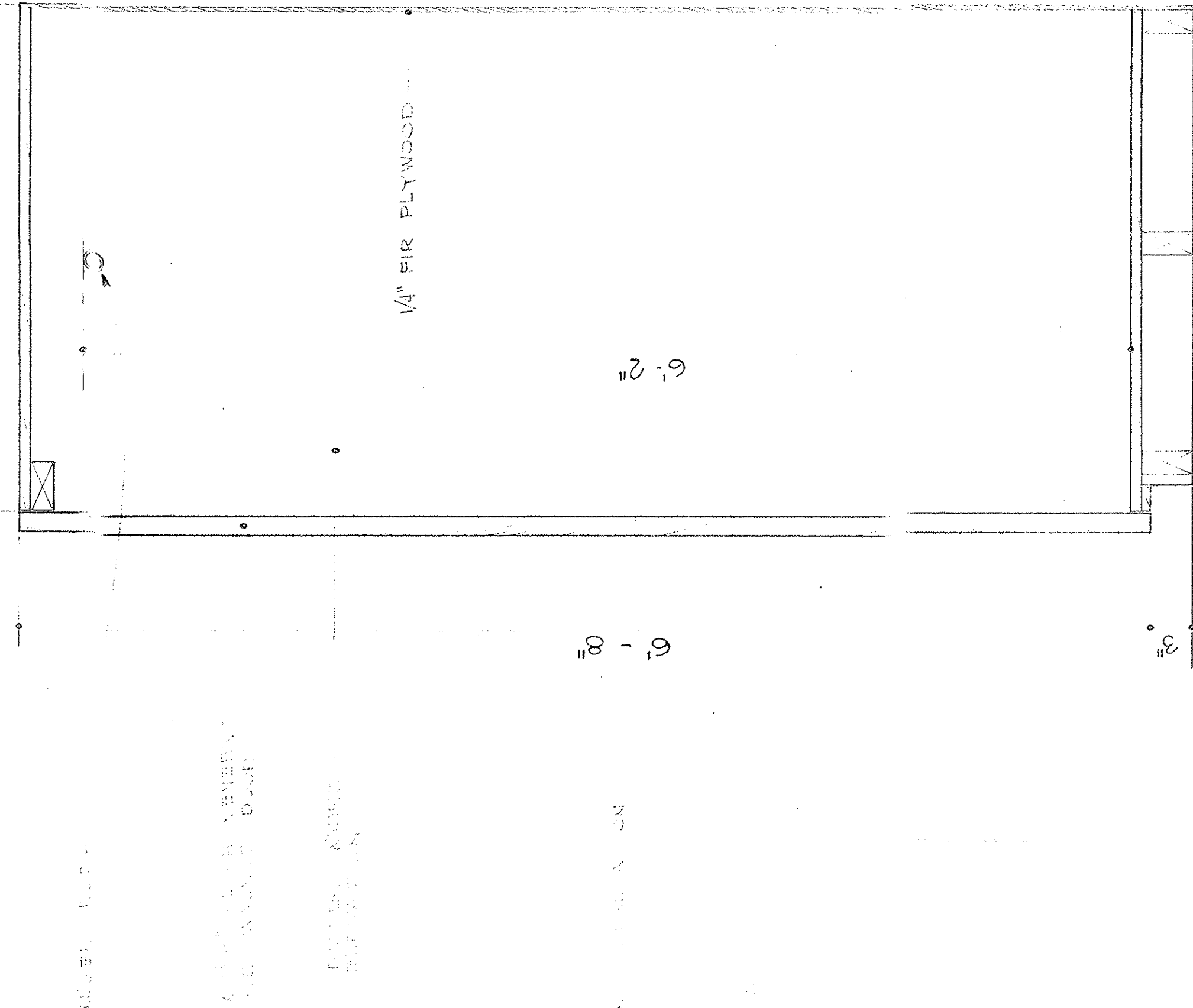
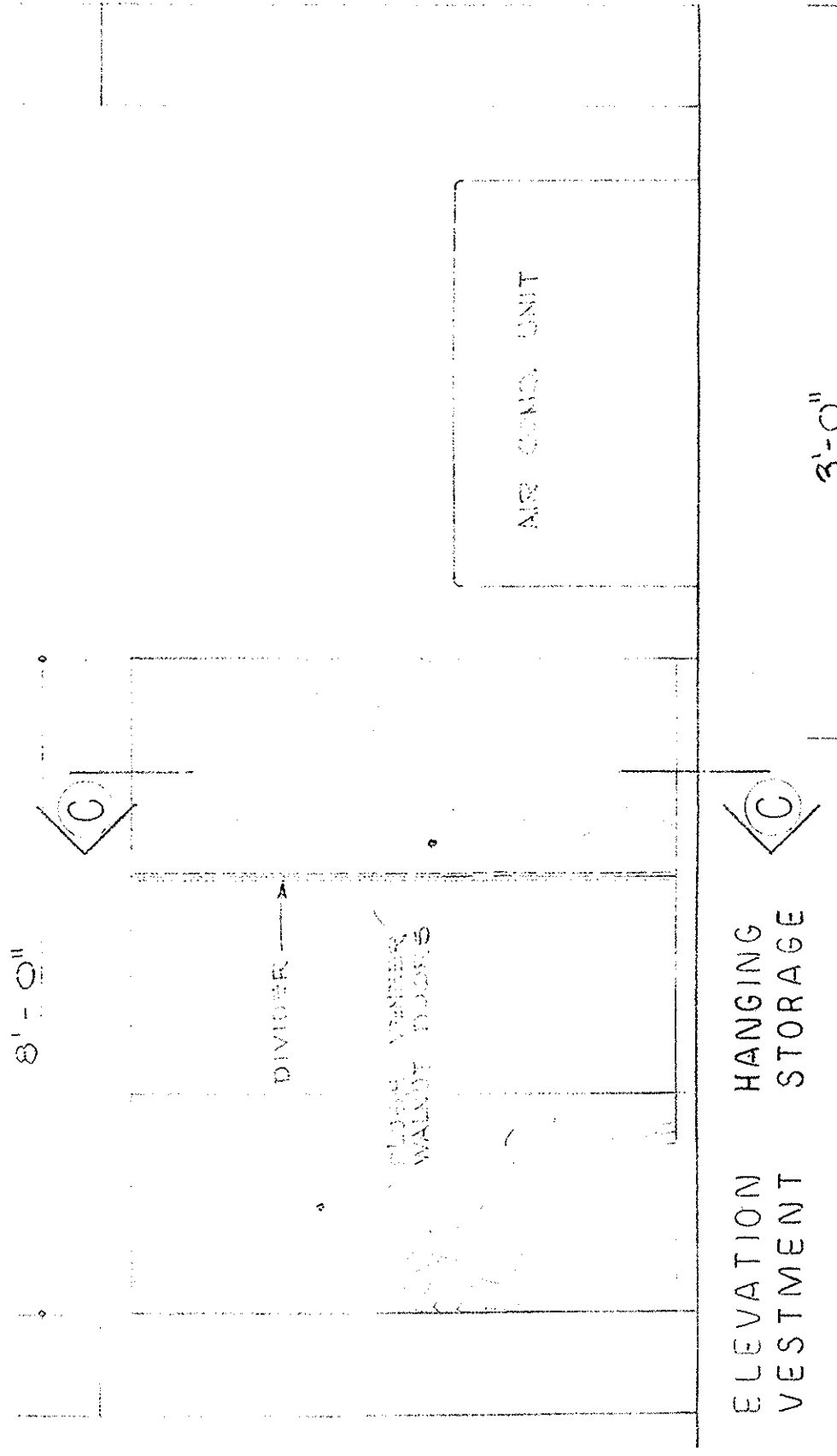
WOODEN PANELS TO BE RECOVERED IN FIELD

19'-0" DIA

6'-0" DIA

4'-4" DIA

4'-4" DIA



SACRED HEART CHURCH
 PINEVILLE LOUISIANA
 REV. PAUL E. CUMWAY PASTOR

BARRON HEINBERG & BROCATO ARCHITECTS
 1015 WISTERIA ST. ALEXANDRIA, LOUISIANA
 JOB NO. 7408 DATE 11/25/55

SHEET CA-1